



# Commissioning and Procurement Update

1<sup>st</sup> November 2016

Peter Moore  
Head of Commissioning Support & Business Intelligence

[www.sefton.gov.uk](http://www.sefton.gov.uk)

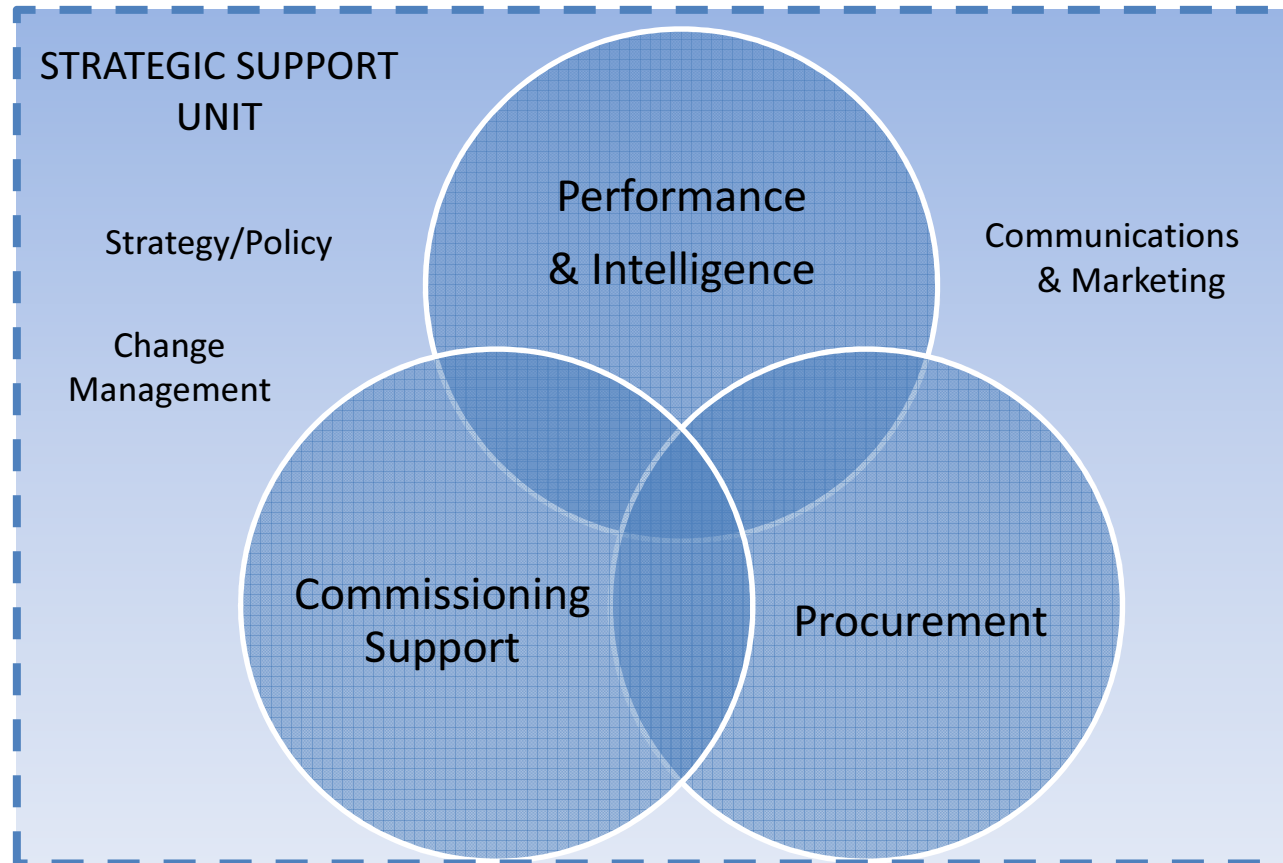
Sefton Council 

 Awards  
**2015** | **Winner**

---

# Commissioning Support & Business Intelligence

---



---

## 2015-16 Key Activity

---

- Strategic Support Unit staffing restructure
- Framework for Change
- LCR Procurement Hub Project
- Review of CPR and processes
- Social Value Task & Finish Group
- Imagine Sefton - Vision 2030



---

# Commissioning Support – 2015-16

---

- Remodelled Adult Social Care Reablement Service
- Remodelling Adult Social Community Day Care Services
- Remodelling Supported Living Services
- Completed Pre-Paid Cards Pilot
- Fee Negotiations – National Living/Minimum Wage
- ASC Market Management
- Integrated Wellness Service
- Redesign 0-19 Service
- Dynamic Purchasing System for Children’s Placements



---

# Procurement Activity

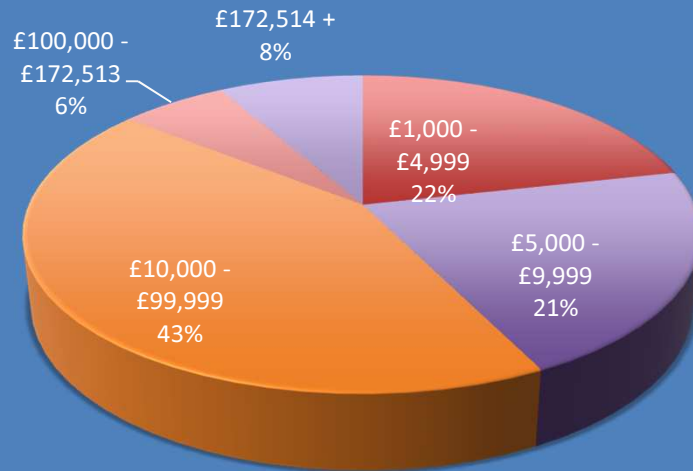
---

BANDING	2013/14 Procurements	2014/15 Procurements	2015/16 Procurements	2016/17* Procurements
£1,000 - £4,999	44	45	60	42
£5,000 - £9,999	8	8	59	34
£10,000 - £99,999	25	96	120	106
£100,000 - £172,513	2	24	17	13
£172,514 +	20	9	23	49
<b>TOTAL</b>	<b>99</b>	<b>182</b>	<b>279</b>	<b>244</b>

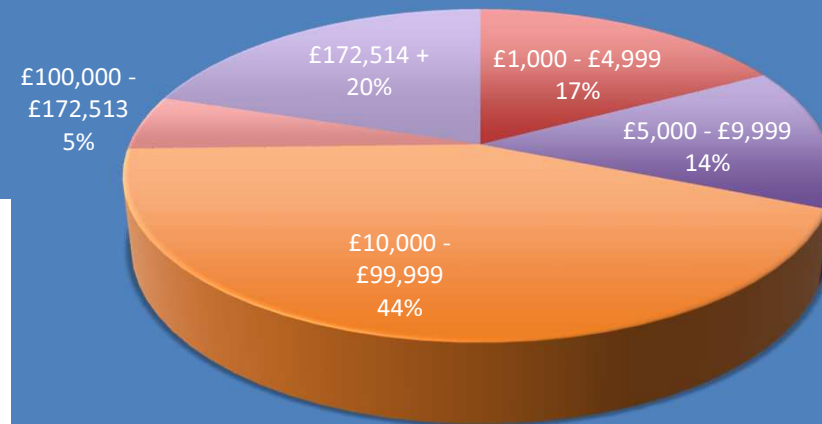


# Procurement Activity

## 2015/16 Procurements



## 2016/17 Procurements



# Procurement Activity

<u>Cost Avoidance Savings</u>	<u>2014/15</u>	<u>2015/16</u>	<u>2016/17*</u>
Total Original Price	£9,279,676	£10,376,728	£2,524,157
Total Number of RFQ's	151	221	53
Total Number of Realised RFQ's	126	194	30
Total Original Price of Realised RFQ's	£8,579,261	£9,234,718	£2,249,427
Total New Price	£7,732,277	£8,313,260	£1,893,839
<b>Total Savings on Original Price of Realised RFQ's</b>	<b>£ 846,983</b>	<b>£921,458</b>	<b>£355,588</b>
<b>Total Savings as % of Original Price of Realised RFQ's</b>	<b>10%</b>	<b>10%</b>	<b>16%</b>
<u>Supplier's Area for Realised RFQ's</u>			
Sefton Area Or Branch	21 (17%)	29 (25%)	7 (24%)
Liverpool Region	25 (20%)	29 (22%)	3 (10%)
Elsewhere	80 (63%)	47 (53%)	19 (66%)



---

## Next Steps

---

- Complete review of CPR & Processes
- Complete refresh of Commissioning Framework
- Implement Performance Framework
- LCR Procurement Hub – LCR and local approaches
  - Spend Analysis
  - Category Management
  - Procurement
  - Social Value
- Workforce Development
- Support commissioning & procurement activity

